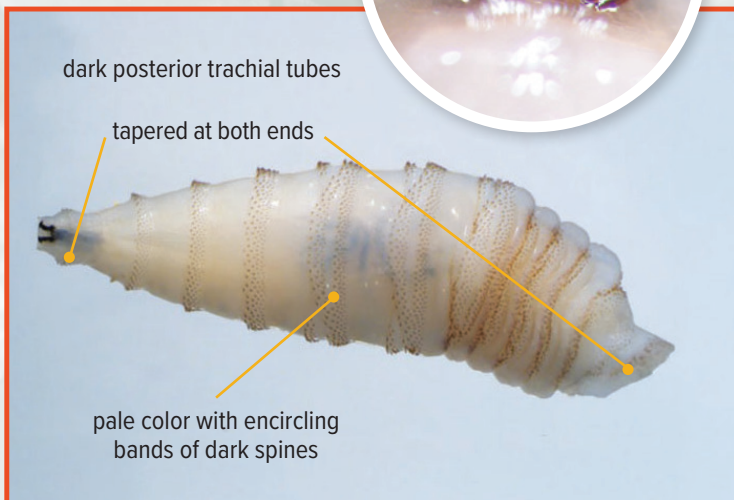
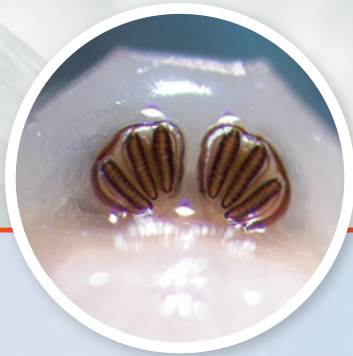


Identifying New World Screwworm

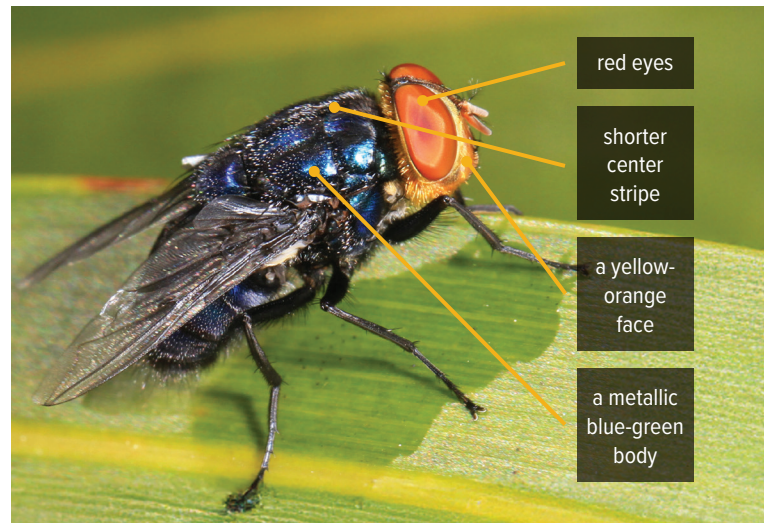
New World Screwworm is a devastating pest that can affect livestock, pets, wildlife, occasionally birds, and in rare cases, people. Adult screwworm flies are about the size of a common housefly (or slightly larger).¹



Screwworm larvae (maggots) burrow into a wound, feeding as they go like a screw driving into wood. The maggots cause extensive damage by tearing at the hosts' tissue with sharp mouth hooks. The wound becomes deeper and larger as more maggots hatch and feed on living tissue.¹

What to look for?

- Look for the following signs in livestock or any warm-blooded animals²:
 - Irritated behavior
 - Head shaking
 - The smell of decay
 - Presence of maggots in a wound
- Egg masses may be around or in the wound; larvae may be visible by the third day of infestation.³
- Because they feed on live flesh, NWS maggots may burrow deep into wounds or openings, while other species of maggots may appear around the outer surface of the wound.³
- Screwworm infestations are very painful. Animals may become depressed, stop eating and separate themselves from other animals or people.³



References:

1. <https://www.aphis.usda.gov/sites/default/files/nws-pest-card.pdf>
 2. <https://www.aphis.usda.gov/sites/default/files/pest-alert-new-world-screwworm.pdf>
 3. <https://www.aphis.usda.gov/sites/default/files/bro-new-world-screwworm.pdf>
 4. <https://entomologytoday.org/2018/05/02/fighting-flies-2016-screwworm-outbreak-response-florida-sterile-insect-technique/screwworm-fly-cochliomyia-hominivorax/>
- Image 3: <https://entomologytoday.org/2018/05/02/fighting-flies-2016-screwworm-outbreak-response-florida-sterile-insect-technique/screwworm-fly-cochliomyia-hominivorax/>
- Images 1,2: <https://www.cdc.gov/myiasis/hcp/clinical-overview/index.html>

IMMEDIATELY REPORT SIGNS TO YOUR STATE ANIMAL HEALTH OFFICIAL:

www.usaha.org/saho

or USDA area veterinarian in charge:

www.aphis.usda.gov/contact/animal-health

For more information, visit:

BQA.org/Screwworm